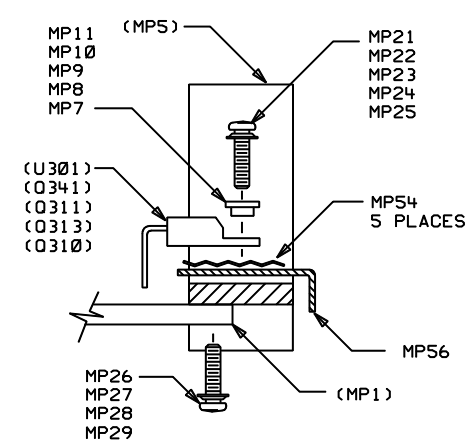
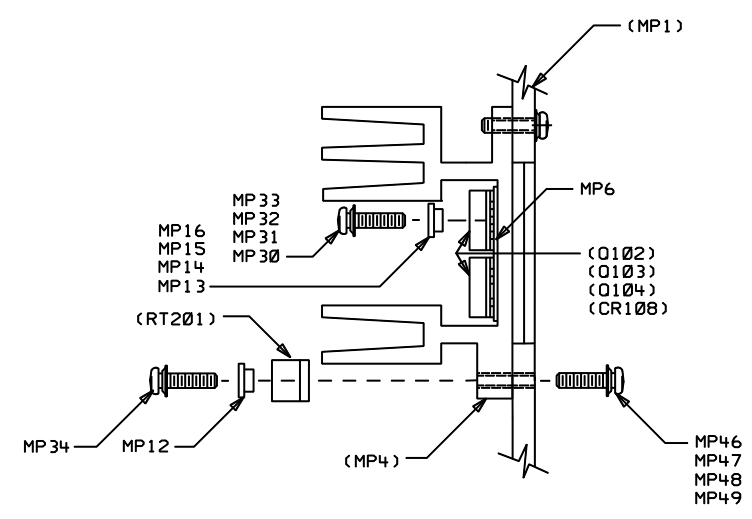


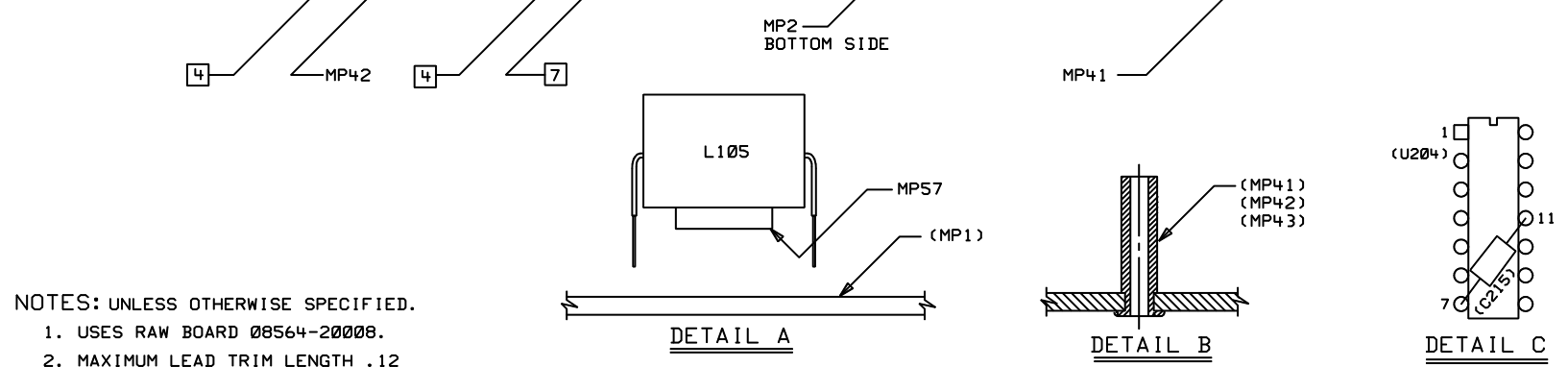
MP3 DETAIL
SCALE: NONE



MP5 DETAIL
SCALE: NONE



MP4 DETAIL
SCALE: NONE



- NOTES: UNLESS OTHERWISE SPECIFIED.
1. USES RAW BOARD 08564-20008.
 2. MAXIMUM LEAD TRIM LENGTH .12
 3. REMOVE TABS AFTER WAVE SOLDER
 4. ASSURE THAT THE FOLLOWING PINS HAVE BEEN REMOVED, J3 PIN 3, J4 PIN 2, PRIOR TO ASSEMBLY AND WAVE SOLDER.
 5. TEST POINTS NOT ON MATERIAL LIST ARE SHOWN FOR REFERENCE ONLY.
 6. MP64 PLUGS INTO J6.
 7. R114 AND C112 ARE NOT LOADED.

SEE 08564-60008 MATERIAL LIST
TOP SIDE

UNLESS OTHERWISE SPECIFIED, DIMENSIONS ARE IN INCHES. TOLERANCES: XX.XXX ±.010 XX.XX ±.02 THIRD ANGLE PROJECTION DO NOT SCALE THIS DRAWING	DRAWN BY	8-4-93 DATE	ASSEMBLY, PWB POWER SUPPLY TITLE	alaby008 FILENAME	HEWLETT PACKARD
	ENGINEER/CHECKER	8-4-93 DATE		SCALE NONE	
	RELEASE TO PROD.	04-21-94 DATE		SHEET 1 OF 1	
	SUPERSEDES DWG.			08564-60008 PART NUMBER	
				D-08564-60008-2	